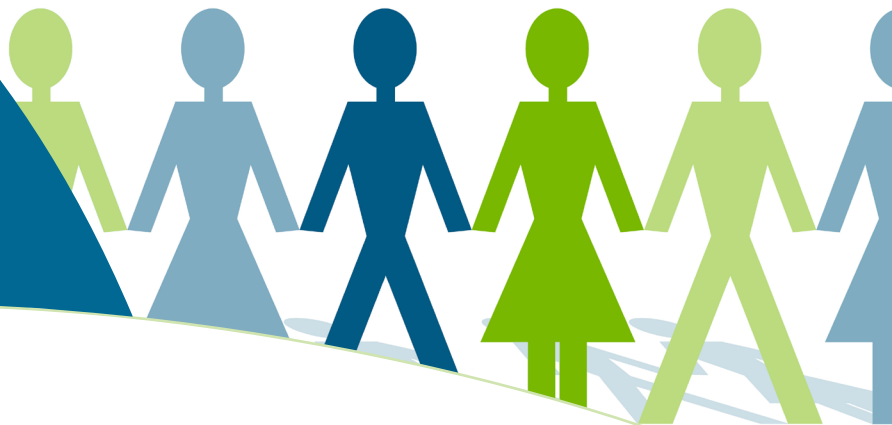


# Financial protection that fits your needs



## With Colonial Life products:

- Coverage is available for your spouse and children with most plans.
- Benefits are paid directly to you, unless you specify otherwise.
- You can continue coverage when you retire or change jobs, with no increase in premiums (with most plans).
- You receive benefits regardless of any other insurance you may have with other insurance companies (with most plans).

Everyone's benefit needs are different. That's why it's important to choose the benefits that are right for your personal situation. Check each benefit you would like to learn more about at your personal, 1-to-1 session with a Colonial Life benefits counselor. At the session, you'll learn how these products fit into your overall benefits package, and you have no obligation to buy anything.

- Disability Insurance** — Replaces a portion of your income to help make ends meet if you become disabled from a covered accident or covered sickness.
- Accident Insurance** — Helps offset the unexpected medical expenses, such as emergency room fees, deductibles and copayments, that can result from a fracture, dislocation or other covered accidental injury.
- Life Insurance** — Enables you to tailor coverage for your individual needs and helps provide financial security for your family members.
- Cancer Insurance** — Helps offset the out-of-pocket medical and indirect, non-medical expenses related to cancer that most medical plans don't cover. This coverage also provides a benefit for specified cancer-screening tests.
- Critical Illness Insurance** — Complements your major medical coverage by providing a lump-sum benefit that you can use to pay the direct and indirect costs related to a covered critical illness, which can often be expensive and lengthy.
- Hospital Confinement Indemnity Insurance** — Provides a lump-sum benefit for a covered hospital confinement and a covered outpatient surgery to help offset the gaps caused by copayments and deductibles that are not covered by most major medical plans.

**Please fill in the following information, and give this sheet back to your Colonial Life benefits counselor.**

Name: \_\_\_\_\_ Date: \_\_\_\_\_

Department/Location: \_\_\_\_\_

Phone: \_\_\_\_\_ Email: \_\_\_\_\_

These coverages may not be available in all states; product benefits vary by state. Policies have exclusions and limitations that may affect benefits payable. For cost and complete details, please see your benefits counselor.

